



Welcome!

- 😊 Welcome! - We want everyone to feel happy and safe when they come to the theatre.
- 🎭 What to Expect - Some people like to know what will happen before the pantomime begins, and that's okay!
- 📖 Your Guide - This picture guide will help you get ready for your visit to The Eric Morecambe Centre and introduce you to the cast of Jack & The Beanstalk.
- 💡 Lights – Learn about the lighting used in the show.
- 🔊 Sounds – Find out about any loud or surprising sounds.
- 🗺 Theatre Layout – Helps you get to know what to expect before you arrive.



Welcome to Jack and the Beanstalk!

Polka Dot Pantomimes and The Eric Morecambe Centre are delighted to announce the Pantomime you've all BEAN waiting for this Christmas 2025 !

Pantomime at the Eric Morecambe Centre is always the highlight of the festive calendar and this year's show promises to be bigger and better than ever as we present a GIANT of a pantomime suitable for the whole family.

Get ready to roar with laughter and cheer our hero Jack on his magical journey to Cloudland as he battles to save his best friend Daisy the Cow!

As always there'll be spectacular scenery, dazzling costumes, amazing special effects and lots of audience participation.

With a fabulous cast featuring some familiar faces and the biggest Giant in Panto land it won't cost you a bag of magic beans but it will be FE-FI-FO-FUN for everyone!



Meet The Cast

Meet the stars of this year's
Jack & The Beanstalk!

Theo Mayne - Fleshcreep
Josh Handley – Tillt Trott
Joe Johnston – Jack
Holly Elle Martin - Princess Jill
Chris Gannon – Silly Simon
Rosie Winter – Fairy Sunshine
Clive Marlowe - King of Harpendia

You can also Meet the Cast via this link:

<https://everyonetheatres.com/whats-on/jack-the-beanstalk-2025>



6 DECEMBER - 30 DECEMBER 2025



Theo Mayne is Fleshcreep

Theo Mayne is best known for his breakout appearance on the BAFTA and NTA award-winning reality TV phenomenon The Traitors, along with a range of other exciting television projects. He is delighted to take on the wickedly fun role of Fleshcreep.

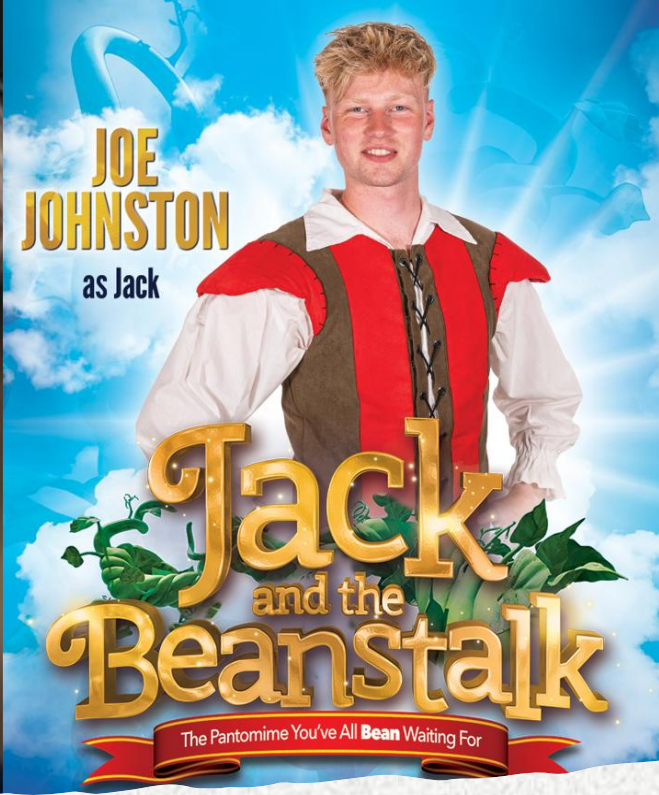
Fleshcreep is the story's formidable antagonist. He lives high above the clouds and possesses great power. He is the 'baddie' in the story and wants to 'grind up Jack's bones. He is a huge character with exaggerated features and a menacing expression.



Josh Handley is Tilly Trott

EMC favourite, Josh Handley is beyond excited to return to the Eric Morecambe Centre after Sleeping Beauty last Christmas. *'Hope you all enjoy the show and watch out fellas. See you up in the clouds. Be lucky my darlings!*

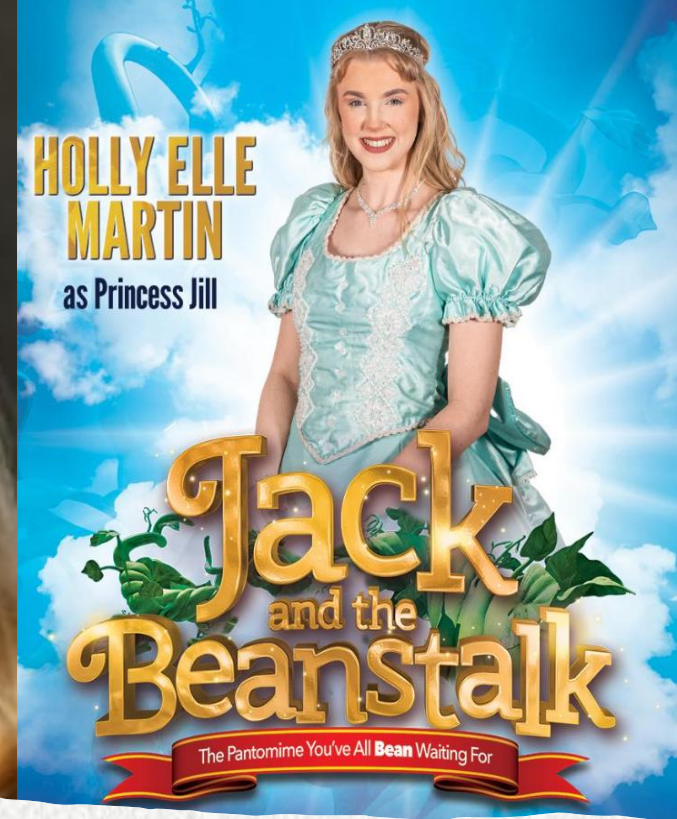
Dame Tilly Trott is Jack's Mother. She has a larger-than-life personality and is funny and kind. She adds to the comedy of the show and wears outrageous dresses and wigs. She is cross when Jack sells Daisy the Cow for the magic beans but tries to save him from the Giant in the end.



Joe Johnston is Jack

Joe Johnston is excited to be making his professional debut as Jack in *Jack and the Beanstalk*. He recently graduated from the London School of Musical Theatre.

Jack is the young, adventurous protagonist of the story. He's resourceful and curious, willing to take risks to improve his family's fortunes. His journey up the beanstalk leads to a series of encounters with magical elements and the giant in the sky.



Holly Elle Martin is Princess Jill

Holly Elle Martin graduated from The Brighton Academy in 2024. She is thrilled to be back working with Polka Dot Pantomimes this year in Harpenden for Jack and the Beanstalk as Princess Jill.

Princess Jill is a beautiful and charming girl. She is kind and courageous and tries really hard to help both Dame Tilly Trot and Silly Billy to save Jack when he goes up the Beanstalk.



Rosie Winter is Fairy Sunshine

Rosie Winter graduated from Bird College with a degree in Professional Dance and Musical Theatre. Rosie is so excited to be sprinkling her fairy dust again, this time over Hertfordshire, Christmas wishes really do come true!



Chris Gannon is Silly Simon

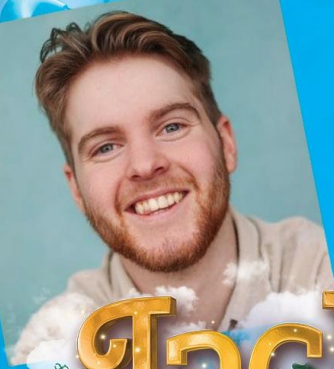
Chris Gannon trained at Mountview Academy of Theatre Arts and The ICMT. Chris is thrilled to be making his Polka Dot Debut as Silly Simon. He's hoping this panto will be bean-credible...no magic beans required.

Silly Simon is the 'Comic' in the Pantomime and is Jack's brother. He is very, very funny and always makes friends with the audience. He does silly dances and has lots of fun being pranks on everyone. He is a kind character and helps to save the day.



Clive Marlow is King of Harpendia

Clive Marlowe is delighted to be returning to the Eric Morecambe Centre after playing Maurice in Beauty and The Beast in 2023. He will be playing the King of Harpendia in Jack and The Beanstalk this Christmas.



Starring
**TOBY
COLLIER**

Jack
and the
Beanstalk



Starring
**KIRSTY
NEWMAN**

Jack
and the
Beanstalk

The Pantomime You've All **Bean** Waiting For

CEMBER - 30 DECEMBER

Harpenden Park, Harpenden, AL5 2FR | Box Office: 01582 767525 | the-emc.co.uk



Starring
**DAPHNE
PASSARIS**

Jack
and the
Beanstalk

The Pantomime You've All **Bean** Waiting For

30 DECEMBER 2025

AL5 2FR | Box Office: 01582 767525 | the-emc.co.uk



Jack
and the
Beanstalk

The Pantomime You've All **Bean** Waiting For

**PRO
DANCERS**



Starring
**CHARLIE
VAUGHAN**

Jack
and the
Beanstalk

The Pantomime You've All **Bean** Waiting For

6 DECEMBER - 30 DECEMBER 2025

Morecambe Centre, Rothamsted Park, Harpenden, AL5 2FR | Box Office: 01582 767525 | the-emc.co.uk



About The Show



- The performance running times may vary, this show has approximate running times of Act 1: 55 minutes / Interval: 20 minutes / Act 2: 50 minutes.



- The show will use smoke and haze in the performance; this is used every time The Fairy and Flesh Creep step on stage.
- The show will contain loud noises, bangs and special light effects, there are moving lights that create patterns on stage and in the auditorium, along with lighting effects used to introduce certain characters. The Fairy is usually shown in pink lighting, while Fleshcreep appears in green. We also use LED lights to add to the magic, which help our Dame “fly” to Cloudland. There are thunder crashes when Fleshcreep appears, and the Giant has a loud, booming voice to match his size.
- Water is used during the performance, specifically at the end of the milking the cow scene, the audience may get a little wet. Please note that the cast do not enter or walk around the audience.
- Audience participation will take place during the performance. There’s plenty of audience participation – cheering the Fairy, booing Fleshcreep, helping Jack with the magic password to enter the Giant’s castle, and helping Tilly and Simon milk Daisy the Cow.
- The use of photography and filming is strictly prohibited at our venue. The use of photography and filming may be permitted during the finale, which will be announced by the cast on the stage.



If you have any worries or questions about the information above, please contact the Box Office before your visit or ask a staff member when you arrive.



This is what a performance at The Eric Morecambe Centre looks like. It is performed in front of forward-facing seats in the stalls and in the balcony upstairs, which means the audience sit in front of the characters.



This is how our auditorium looks from the stage and from the stalls looking up to the balcony.

Our theatre accommodates up to 511 for seated events and for standing events it can accommodate 751.

We offer a diverse programme of shows, including pantomimes, comedy, live music and guest talks.

Accessible Parking at The Eric Morecambe Centre

- For car parking, follow signs to Harpenden Leisure Centre and park in the Amenbury Lane Car Park, which is located next to the Leisure Centre. The Postcode for the car park is AL5 2HS.
- We are a short walk from Amenbury Lane car park and there are dropped curbs, and ramps for wheelchairs along the way. Please note the ramp is on an incline and there is a graveled section.
- There are parking spaces available to Blue Badge holders located in the Leisure Centre Car Park, these spaces are subject to availability.



What To Expect At The Theatre



There is level access to the entrance of The Eric Morecambe Centre via the ramp.



Level access remains throughout the main entrance, box office & foyer area. There is a lift to the ground floor where level access continues.



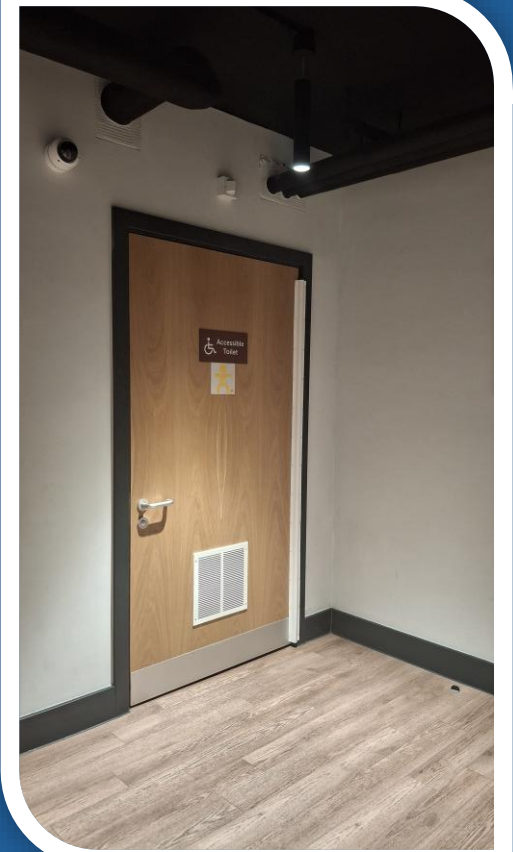
This is the front entrance to Eric Morecambe Centre. There is wheelchair access through the automatic front doors of the theatre, and manual foyer doors.



Priority seating is available in the main foyer. This area may also be utilised during show times as a quiet space if available. One of our function rooms may also be available. Please check on the day.



This is the Box Office where you can book tickets, amend your existing booking or ask any queries you may have. People can gather here if you are waiting for additional members of your party to arrive before the show starts.



Disabled Toilets are located on the lower and upper levels as well as the main toilets which are also located on the upper and lower floors. The lower-level toilets are accessible via lift or via 15 stairs.



Café Bar (located on upper/entrance level)

The Café Bar offers:

- **Hot, cold drinks, soft drinks and smaller selection of alcoholic beverages.**
- **Confectionary snacks such as crisps, ice cream and small selection of chocolate packs.**



Main Bar (located on lower/ground level - accessible via or 15 stairs)

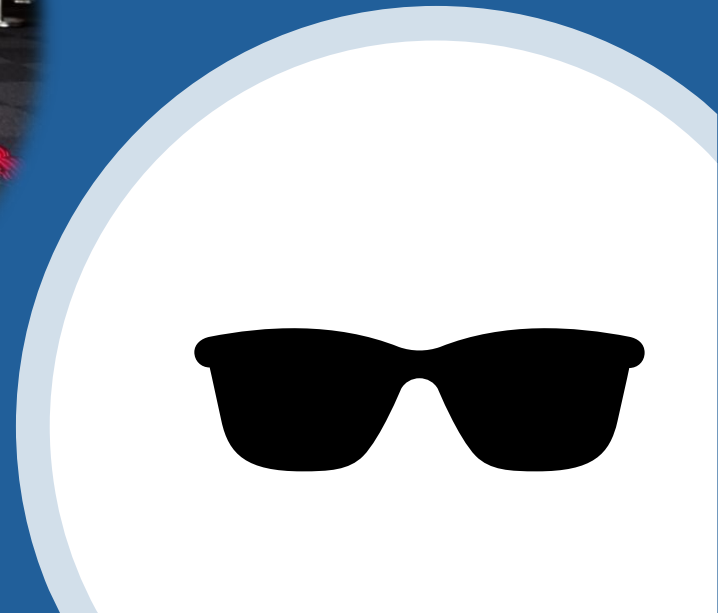
The Main Bar Offers:

- **Hot, cold, soft and wider range of alcoholic beverages, Confectionary snacks such as crisps, ice cream and a small selection of chocolate packs.**

Access Pack Tote Bags

At The Eric Morecambe Centre we have a limited number of Access Pack Tote Bags available. This tote bag includes items such as:

- Ear Defenders and Ear Plugs
 - Sunglasses
 - Colouring Sheets and Crayons
 - Fidget Toy
 - Printed Version of Access Pack
-
- These Access Pack Tote Bags can be reserved from The Box Office in advance by telephone or email.
-
- Please note: You will be required to leave a deposit of either £20 cash or a form of ID , either option will be returned to you in exchange for the Access Pack Tote Bag at the end of the performance. If The Box Office is closed, please return your Access Pack Tote Bag to The Duty Manager.



BSL PERFORMANCE
Wednesday 17th
December 6pm



WaveCAST

- At The Eric Morecambe Centre we have a WaveCAST WIFI system for individuals who are Hard of Hearing.
- To access this, download the Williams AV WaveCAST App.
- On your Mobile Device, open your WIFI settings and connect to Harpenden Show Audio. (Password - Harpenden2021) This connection will show with No Internet Access and on some devices you may need to turn off mobile data.
- Open the WaveCAST app and connect to Harpenden Show Audio. (You may need to be inside the Auditorium to connect and to listen to any audio)
- Please note we have a spare device on site should you not own a smart device, or your own device cannot connect. Please speak to the Duty Manager on site should you require any assistance.

If you have any queries in advance of your visit, please contact the Box Office directly

Other Information



Your guide, hearing or support dog is welcome. Please advise the Box Office at time of booking. We do require proof of eligibility through a Recognised Assistance Dog ID card.



We have a BSL signed for the hard of hearing on Wednesday 17th December 6pm. For further information on these, please contact the Box Office.



Touch tours may be available upon request. Please contact the Box Office.



Please do check your booking carefully and if you need to make any amendments to your booking then please visit the box office or contact the venue.

For more information, please contact us at the Box Office.



Call The Box Office on 01582 767525 between the hours of 10am-2pm, Monday to Saturday.



Email the team on emcticketing@everyoneactive.com



Visit and speak with our friendly Box Office team in-person between the hours of 10am-2pm, Monday to Saturday.



[Accessibility](#) | [The Eric Morecambe Centre](#) | [Everyone Theatres](#)



**We aim to be as accessible and inclusive as possible for everyone who visits our venue.
We are here to ensure everyone's visit to the Eric Morecambe Centre is a positive and memorable one.**